

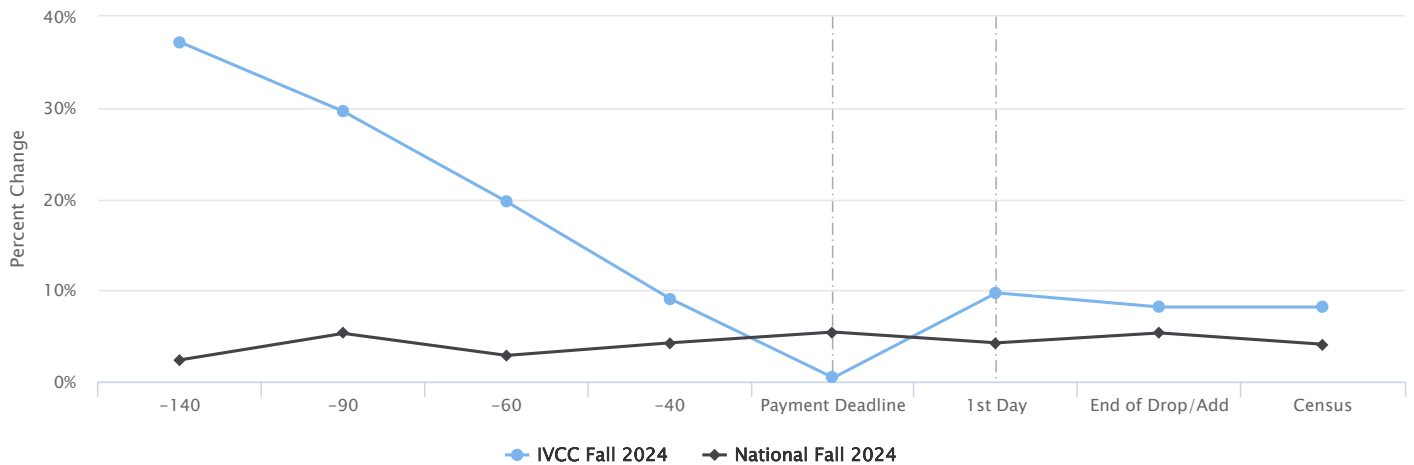
Phase 1 Executive Report for Dr. Tracy Morris

ILLINOIS VALLEY COMMUNITY COLLEGE

Key National Benchmarks – Where Does Your Institution Stand?

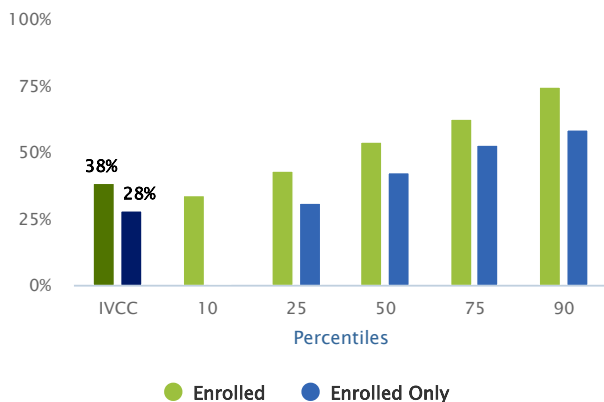
Thank you for participating in the National Community College Benchmark Project in 2024. This year's New Phase 1 report selects a few key data for your institution compared to the national benchmarks, including newly added data showing your Fall 2024 enrollment against national trends. The full NCCBP report, available online, contains more than 150 additional benchmarks, which are collectively intended to support your planning, assessment, peer comparisons and strategic decision-making activities.

Enrolled Student Credit Hours (SCH) by Days from Census – Percent Change

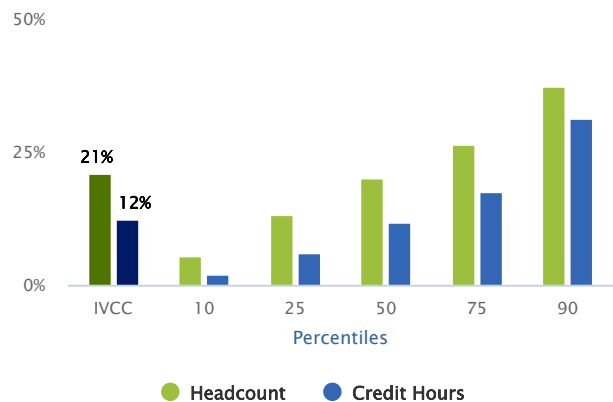


The percentage change of student credit hours between Fall 2023 enrollment compared to Fall 2024 enrollment over the period of 140 days prior to and throughout until the college's census day.

Online/Distance Learning
Percentage of Students Enrolled in
Online Courses



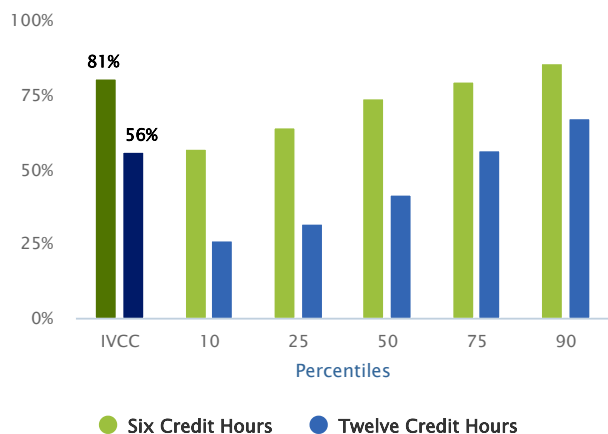
Concurrent High School Programs
Percentage of Students Enrolled in
Concurrent High School Programs



The percentage of Fall 2023 students enrolled in at least one online/distance learning course and those only enrolled in online/distance learning courses.

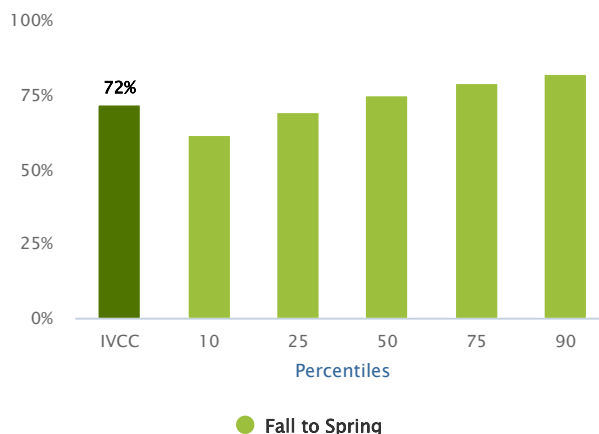
The percentage of Fall 2023 students enrolled in concurrent high school programs includes only high school students taking classes at their high school taught by current high school teachers/partner faculty.

Early Momentum Metrics Credit Momentum Rate



The percentage of first-time students from Fall 2023 completing 6 or 12 credit hours by the end of the Fall 2023 term.

Early Momentum Metrics Persistence Momentum Rate



The percent of first-time college students in the Fall 2023 enrolled in the Spring 2024 term.



2025 Benchmarking Conference

June 16-18, 2025
Overland Park, KS

Keynote: Cory Clasemann, President
Southeast Technical College

nccbp.org/conf2025/main



More Information

Contact your IR Office for your institution's specific results.

Visit: nccbp.org

Contact Us:

Dr. Jacque Eidson
Director
913.469.7658
jeidson2@jccc.edu

Michelle Taylor
Sr. Research Analyst
913.469.3831
michelletaylor@jccc.edu

